

# Come back from career setbacks with the SkillsFuture Jobseeker Support (JS) scheme

Whether it's attending a career event, getting job search advice or signing up for training to find your next job opportunity, we are here to help you bounce back stronger.



For more information on the JS scheme, visit [go.gov.sg/wsg-jsscheme](https://go.gov.sg/wsg-jsscheme)



For jobseekers aged 21 and above, **earning an average gross monthly income of ≤ \$5,000 in the past 12 months**



For jobseekers who live in a property in Singapore with **Annual Value of up to \$31,000**



For jobseekers who become **unemployed due to involuntary reasons** such as retrenchment, cessation of business, dismissal or termination due to illness, injury or accident



Applicants must be **actively engaging in job search and training** to regain employment

## About the scheme

Facing sudden job loss can be challenging, but it is not permanent and can present opportunities for growth and new beginnings.

The **SkillsFuture Jobseeker Support (JS) scheme** offers temporary financial support of up to \$6,000 over 6 months for involuntarily unemployed jobseekers actively seeking employment.

## Your partner in career transitions

As you embark on this journey, Workforce Singapore (WSG) is ready to equip you with the tools and resources to get your career back on track. **Stay determined and be proactive.** **Your next opportunity awaits.**



# Who can apply?



Jobseekers aged 21 and above<sup>1</sup>, earning an average gross monthly income of ≤ \$5,000\* in the past 12 months



Previously employed in Singapore for at least 6 months in the past 12 months



Became unemployed due to involuntary reasons – retrenchment, cessation of business, dismissal or termination due to illness, injury or accident



Live in a property in Singapore with Annual Value\*\* of up to \$31,000



<sup>1</sup>Applications for Singapore citizens open from April 2025. Permanent Residents may apply in Q1 2026.

\*Inclusive of bonuses, allowances and overtime pay before CPF contributions.

\*\*You may find out about the Annual Value of your residential property through the IRAS portal or through Myinfo via Singpass. The Annual Value of HDB generally falls below \$21,000, while some lower-value private properties have Annual Value between \$21,000 and \$31,000.

## How do I apply?



Visit [go.gov.sg/jsscheme-eligibility](https://go.gov.sg/jsscheme-eligibility) or scan here to check your eligibility and apply using your Singpass. It takes about 10 minutes.



Prepare the following document(s) before you apply:

- Official letter or notification of termination/dismissal by former employer
- If you were terminated due to medical reasons, please provide a medical certificate or an official letter from the medical institution/doctor

We will contact your previous employer to verify the information you provided. Processing the application may take up to 10 days. You will be informed of the application outcome via email.

## Need to speak to someone?



You can speak to the JS scheme ambassadors at the following locations:

- Careers Connect (Lifelong Learning Institute)
- e2i Career Centre (Devan Nair Institute for Employment and Employability)
- e2i Career Centre (One Marina Boulevard)
- ServiceSG Centre Our Tampines Hub
- ServiceSG Centre Woodlands
- Social Service Office @ Toa Payoh

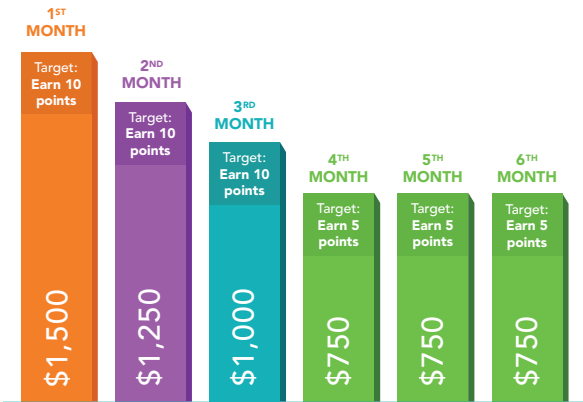
Visit [go.gov.sg/jsscheme-locations](https://go.gov.sg/jsscheme-locations) or scan the QR code to see the latest list of locations.



Alternatively, you may wish to contact our hotline, **6883 5885** for more information.

# What do I do after my application is approved?

Begin a job search activity to start earning points under the scheme. When you meet the monthly points targets, the payouts will be processed and disbursed to your PayNow-NRIC account. Please see below for more details on the payout structure.



Maximum monthly payouts

To support jobseekers in finding a job that makes better use of their skills and experiences, eligible applicants can receive temporary financial support of up to \$6,000 over 6 months.

The monthly payouts are capped at the jobseeker's past average gross monthly income. The monthly payouts stop when the jobseeker secures a job.




If your past average gross monthly income is lower than the amount listed, you will receive your past average gross monthly income instead. For example, a jobseeker with a past average gross monthly income of \$900 will not receive more than \$900 in the monthly payouts.

# How do I earn points?


Jobseekers can receive payouts as they play their part in their search journey by actively taking part in the activities-based system (i.e., at least 10 points/month for the first 3 months, and at least 5 points/month for the next 3 months).

There is a cap on the number of times you can earn points from these activities per month, except those indicated as 'No limit'.

To earn the points, you will be required to declare each completed activity by uploading supporting documents to the JS scheme portal, such as showing the date of completion of each activity or enrolment into a course. Please refer to the portal on how to submit proofs.

 Point(s) per completed activity

 **NL** No limit

 Maximum number of times you can earn points from this activity per month

**Register with an employment agency**



1pt

1x

**Attend a Skills and Training Advisory or SkillsFuture Advice Workshop by SkillsFuture Singapore**



1pt

1x

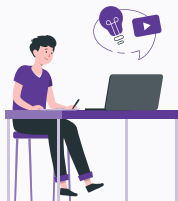
**Browse or subscribe to different career-related content such as CareersCompass by MyCareersFuture**



1pt

2x

**Apply for WSG's Career Conversion Programme or Mid-Career Pathways Programme**



1pt

3x

**Submit a job application on MyCareersFuture or other job portals**



1pt

5x

Attend a training course listed on MySkillsFuture



2pts

1x

Update your resume in an online job portal



2pts

1x

Chart your career with the CareersFinder quiz



2pts

1x

Attend a career-related event, workshop or seminar



2pts

3x

Participate in an employment-related volunteer programme



2pts

NL

Network with an industry professional



3pts

1x

Attend career coaching sessions or advisory services



4pts

1x

Attend a job interview



4pts

NL

# What else should I know about the scheme?

## 1 How is “involuntary unemployment” defined?

The jobseeker is defined as “involuntarily unemployed” if he did not choose to leave his last job, i.e. he did not initiate the termination of his employment contract with the employer.

Examples include retrenchment, cessation of business, and dismissal by employers (e.g. physically unable to perform the same role).





## 2 How do I find out if I meet the criterion on living in a property with an Annual Value of \$31,000 and below?

You may find out about the Annual Value of your residential property through the IRAS portal or through Myinfo via Singpass.

The Annual Value of HDB generally falls below \$21,000, while some lower-value private properties have Annual Value between \$21,000 and \$31,000.



### 3 I am receiving support from another government programme (e.g. receiving training allowance from a SkillsFuture Career Transition Programme). Can I still qualify for the scheme?

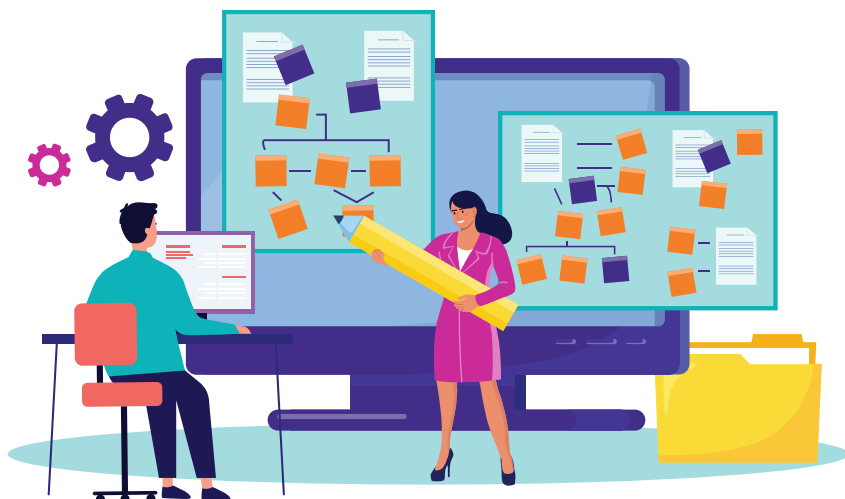
Yes, if you meet the eligibility criteria, you can still qualify for this scheme while receiving support from another government programme.

### 4 If I have been involuntarily unemployed but have reached the retirement or re-employment age, am I eligible for this scheme?

Yes, you are eligible if you meet the eligibility criteria of the scheme. There is no upper age limit.

### 5 What if I do not meet the eligibility criteria, but I still need support?

You can register for career support services through WSG online or approach WSG and e2i career centres. You can also visit SupportGoWhere for a comprehensive list of support services from the government.



# Where do I go for more support?

For those who require more assistance, visit [go.gov.sg/jsscheme-supportgowhere](https://go.gov.sg/jsscheme-supportgowhere) for a comprehensive list of support services from the government.



You can also download the **LifeSG app** to access them on your mobile phone.



## Other career support and resources

Tap on WSG's tools and services to get the support and guidance you need to bring your career back on track. Visit [go.gov.sg/jsscheme-careermatching](https://go.gov.sg/jsscheme-careermatching) for more information.



Download the resume and interview starter pack to get you started on the job search process. Read more at [go.gov.sg/jsscheme-starterpack](https://go.gov.sg/jsscheme-starterpack).

