

In support of



Come back from career setbacks with the **SkillsFuture Jobseeker Support (JS) scheme**

Whether it's attending a career event, getting job search advice or signing up for training to find your next job opportunity, we are here to help you bounce back stronger.



For more information on the JS scheme, visit go.gov.sg/jsscheme



For jobseekers aged 21 and above, **earning an average gross monthly income of ≤ \$5,000 in the past 12 months**



For jobseekers who live in a property in Singapore with **Annual Value of up to \$31,000**



For jobseekers who become **unemployed due to involuntary reasons** such as retrenchment, cessation of business, dismissal or termination due to illness, injury or accident



Applicants must be **actively engaging in job search and training** to regain employment

About the scheme

Facing sudden job loss can be challenging, but it is not permanent and can present opportunities for growth and new beginnings.

The **SkillsFuture Jobseeker Support (JS) scheme** offers temporary financial support of up to \$6,000 over 6 months for involuntarily unemployed jobseekers actively seeking employment.

Your partner in career transitions

As you embark on this journey, Workforce Singapore (WSG) is ready to equip you with the tools and resources to get your career back on track. **Stay determined and be proactive.** **Your next opportunity awaits.**



Information is accurate at the time of print.

Who can apply?



Jobseekers aged 21 and above¹, earning an average gross monthly income of ≤ \$5,000* in the past 12 months



Previously employed in Singapore for at least 6 months in the past 12 months



Became unemployed due to involuntary reasons – retrenchment, cessation of business, dismissal or termination due to illness, injury or accident



Live in a property in Singapore with Annual Value** of up to \$31,000



¹Applications for Singapore citizens open from April 2025. Permanent Residents may apply in Q1 2026.

*Inclusive of bonuses, allowances and overtime pay before CPF contributions.

**You may find out about the Annual Value of your residential property through the IRAS portal or through Myinfo via Singpass. The Annual Value of HDB generally falls below \$21,000, while some lower-value private properties have Annual Value between \$21,000 and \$31,000.

Information is accurate at the time of print.

How do I apply?



Prepare the following document(s) before you apply:

- Official letter or notification of termination/dismissal by former employer
- CPF transaction history for the past 15 months
- If you were terminated due to medical reasons, please provide a medical certificate or an official letter from the medical institution/doctor

We will contact your previous employer to verify the information you provided. Processing the application may take up to 10 days. You will be informed of the application outcome via email.

Visit go.gov.sg/jsscheme-eligibility or scan here to check your eligibility and apply using your Singpass. It takes about 10 minutes.



Need to speak to someone?



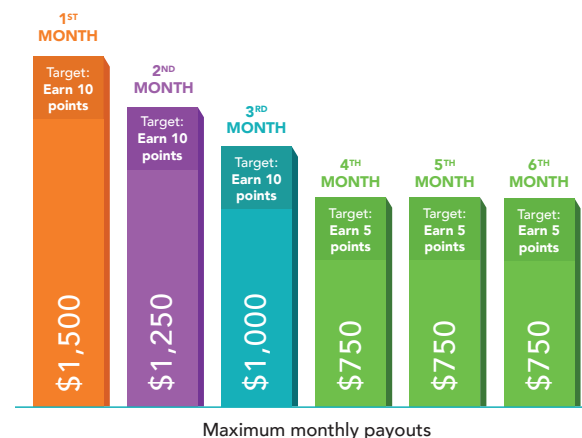
To speak to someone about the JS scheme, please contact our hotline **6883 5885**.

Alternatively, please visit go.gov.sg/jsscheme-locations or scan the QR code to see the latest list of locations.



What do I do after my application is approved?

Begin a job search activity to start earning points under the scheme. When you meet the monthly points targets, the payouts will be processed and disbursed to your PayNow-NRIC account. Please see below for more details on the payout structure.



If your past average gross monthly income is lower than the amount listed, you will receive your past average gross monthly income instead. For example, a jobseeker with a past average gross monthly income of \$900 will not receive more than \$900 in the monthly payouts.

To support jobseekers in finding a job that makes better use of their skills and experiences, eligible applicants can receive temporary financial support of up to \$6,000 over 6 months.

The monthly payouts are capped at the jobseeker's past average gross monthly income. The monthly payouts stop when the jobseeker secures a job.

How do I earn points?

Jobseekers can receive payouts as they play their part in their search journey by actively taking part in the activities-based system (i.e., at least 10 points/month for the first 3 months, and at least 5 points/month for the next 3 months).

There is a cap on the number of times you can earn points from these activities per month, except those indicated as 'No limit'.

To earn the points, you will be required to declare each completed activity by uploading supporting documents to the JS scheme portal, such as showing the date of completion of each activity or enrolment into a course. Please refer to the portal on how to submit proofs.

Point(s) per completed activity

NL No limit

Maximum number of times you can earn points from this activity per month

Register with an employment agency



1pt

1x

Attend a Skills and Training Advisory or SkillsFuture Advice Workshop by SkillsFuture Singapore



1pt

1x

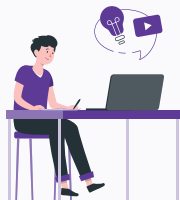
Browse or subscribe to different career-related content such as CareersCompass by MyCareersFuture



1pt

2x

Apply for WSG's Career Conversion Programme or Mid-Career Pathways Programme



1pt

3x

Submit a job application on MyCareersFuture or other job portals



1pt

5x

Attend a training course listed on MySkillsFuture



2pts

1x

Update your resume in an online job portal



2pts

1x

Chart your career with the CareersFinder quiz



2pts

1x

Attend a career-related event, workshop or seminar



2pts

3x

Participate in an employment-related volunteer programme



2pts

NL

Network with an industry professional



3pts

1x

Attend career coaching sessions or advisory services



4pts

1x

Attend a job interview



4pts

NL

What else should I know about the scheme?

1 How is “involuntary unemployment” defined?

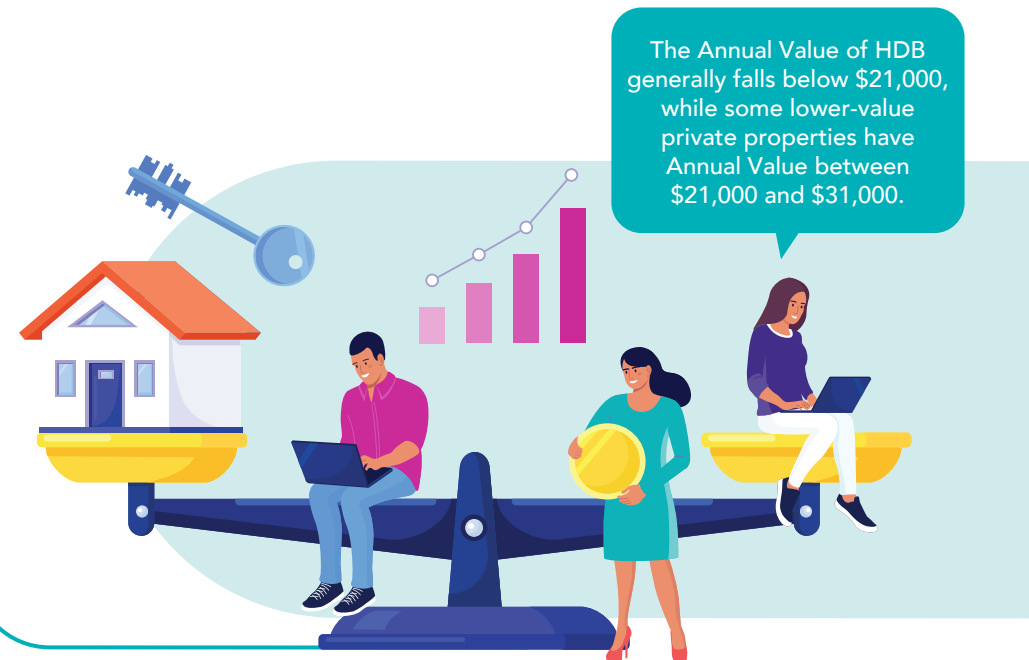
The jobseeker is defined as “involuntarily unemployed” if he did not choose to leave his last job, i.e. he did not initiate the termination of his employment contract with the employer.

Examples include retrenchment, cessation of business, and dismissal by employers (e.g. physically unable to perform the same role).



2 How do I find out if I meet the criterion on living in a property with an Annual Value of \$31,000 and below?

You may find out about the Annual Value of your residential property through the IRAS portal or through Myinfo via Singpass.



3

I am receiving support from another government programme (e.g. receiving training allowance from a SkillsFuture Career Transition Programme). Can I still qualify for the scheme?

Yes, if you meet the eligibility criteria, you can still qualify for this scheme while receiving support from another government programme.

4

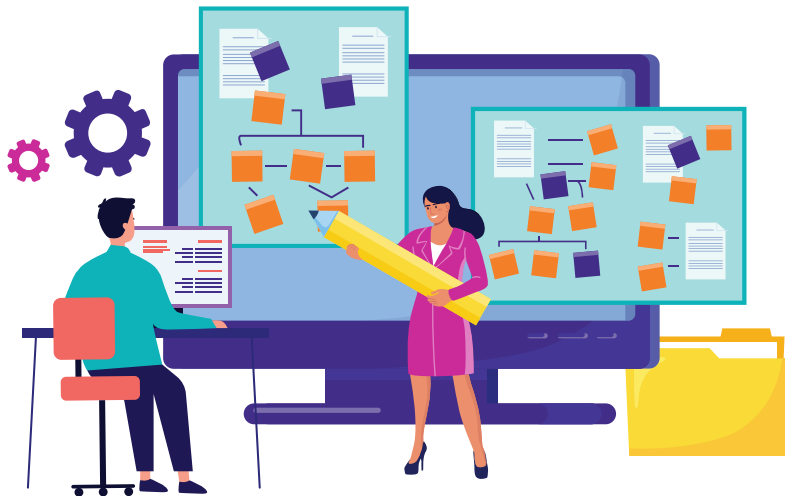
If I have been involuntarily unemployed but have reached the retirement or re-employment age, am I eligible for this scheme?

Yes, you are eligible if you meet the eligibility criteria of the scheme. There is no upper age limit.

5

What if I do not meet the eligibility criteria, but I still need support?

You can register for career support services through WSG online or approach WSG and e2i career centres. You can also visit SupportGoWhere for a comprehensive list of support services from the government.



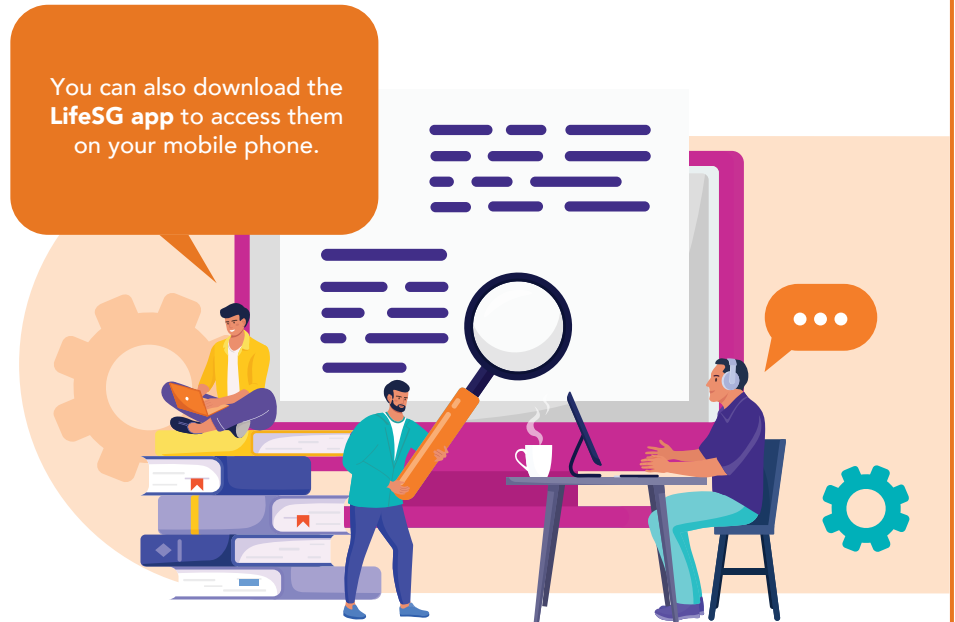
Information is accurate at the time of print.

Where do I go for more support?

For those who require more assistance, visit go.gov.sg/jsscheme-supportgowhere for a comprehensive list of support services from the government.



You can also download the **LifeSG app** to access them on your mobile phone.



Information is accurate at the time of print.

Other career support and resources

Tap on WSG's tools and services to get the support and guidance you need to bring your career back on track. Visit go.gov.sg/jsscheme-careermatching for more information.



Download the resume and interview starter pack to get you started on the job search process. Read more at go.gov.sg/jsscheme-starterpack.

